

OGEE GUTTER Installation

Fixing to Timber Fascia

Fix a bracket at the high end of fall first, then fix a bracket at the low end of the fall. Stringline a common datum on both brackets and install the remaining brackets at the required spacing (not exceeding 1000mm) with common datum on the stringline.

The brackets are best attached to the fascia with the use of 10 x 25mm wafer head self drilling screws.

Attaching Gutter to Internal Brackets

Hook the front of the gutter onto the end of the long arm of the brackets, then slide the back of gutter under the long arm until it is hard up to the back of the bracket. Push the gutter into the upright position, lifting the bottom of the gutter onto the platform provided by the bracket. When the gutter is in the correct position, turn down both tabs of the gutter brackets onto the back of the gutter to complete the attachment.

Spring Clip System

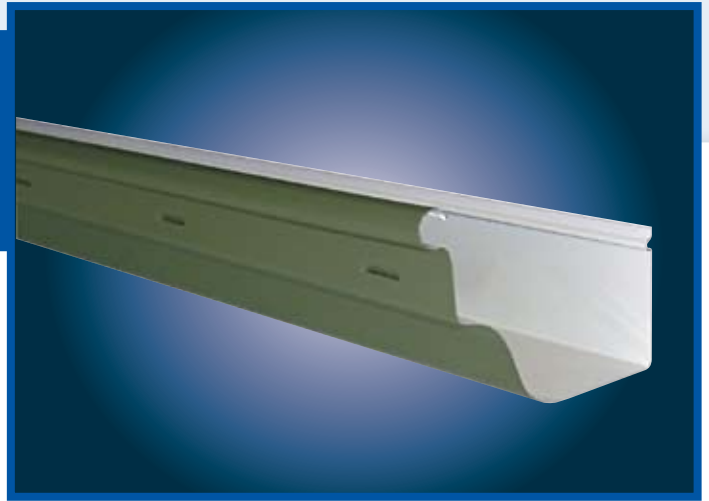
Fixing to metal fascia is made very easy by using the Spring Clip. The clip snaps over the metal fascia and has six teeth at alternative heights. The fall of gutter to downpipe outlet is determined by the height of the gutter attached to these teeth. The face of gutter is then supported by the stiffeners, which connect to the front bead of the gutter and top bead of the fascia.

Support Recommendations

Gutter brackets spacing should not exceed 1000mm. Where metal fascia is used brackets must be placed within 150mm either side of the rafter brackets.

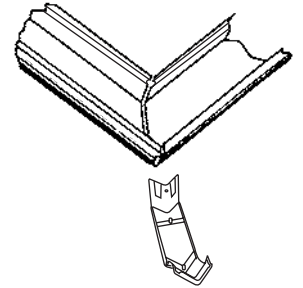
Stop Ends

Preformed stop ends provide a neat finish to straight runs of gutter, and require less labour and skill than site formed ends. However both methods require the use of rivets and a roofing type silicone sealant.



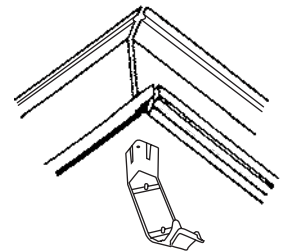
External Corners

Cut the gutter ends at 45° as shown. Fix external and internal corner over mitred cuts, use rivets or screws and silicone.



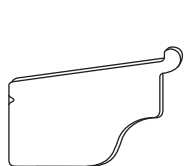
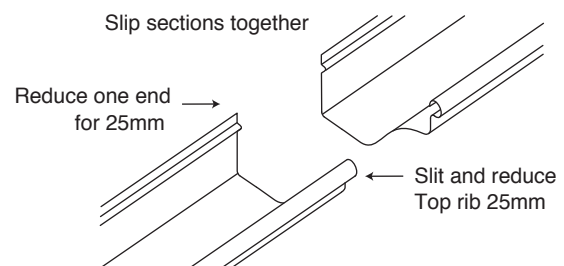
Internal Corners

Cut the gutter ends at 45° as shown. Assemble in a similar manner to external corners.

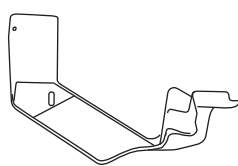


Gutter Joining

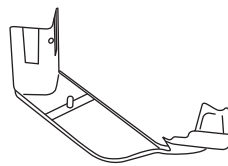
Reduce the top rib for 25mm to allow for a slip joint. Slide the reduced end into the other end, applying a suitable sealant, then blind rivet together.



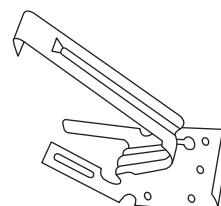
Stop End



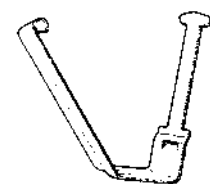
Internal Corner Mitre



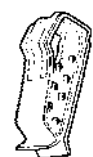
External Corner Mitre



Internal Bracket



Stiffener



Spring Clip

