

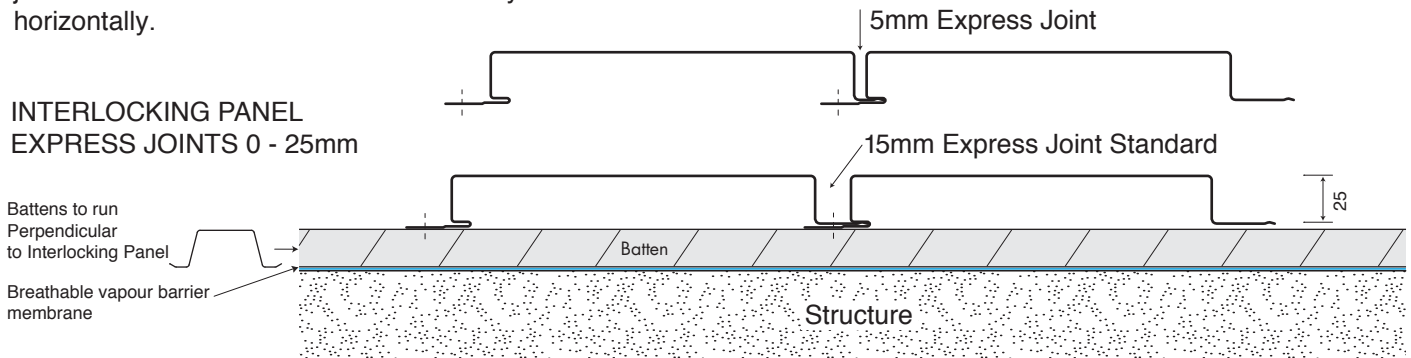
# INTERLOCKING WALL PANEL

JH STEPHENSON  
CLASSIC EURO PANEL RANGE  
WALL CLADDING

Panel is fixed to batten attached to main structure (concrete, brick, steel etc.) which provides a ventilation air gap. A breathable vapour barrier membrane is required between the structure and the batten.

Panel interlocking groove provides a variable express joint 0-25mm. Panel can be fixed vertically or horizontally.

## INTERLOCKING PANEL EXPRESS JOINTS 0 - 25mm



### Preparation

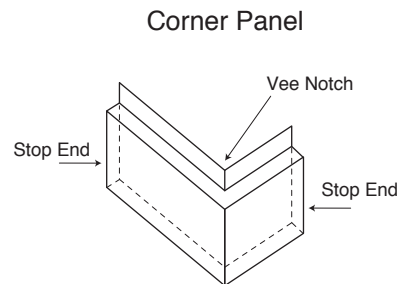
The battens must be rigid and in one plane at 600mm centres max.

### Material Availability

- Colorbond®
- Colorbond® Ultra
- Colorbond® Metallic
- Colorbond® Matt
- Galvanised

### Standard Interlocking Panel Specifications

Panel Depth and Cover	25 x 200	25 x 300
Express Joint Width -	5-25mm	
Panel Length	- 0.5m - 6.0m	
Minimum Pitch	- 90° Walls only	
Batten Span	- 600mm	
Stop End	- 20mm Stop End	
Notching	- V Notch Corner	
Screws	- Timber - Wafer 10-12 x 25 - Steel - Wafer 10 - 24 x 22	



Colorbond®



Phone 03 5274 6222 [www.jhstephenson.com.au](http://www.jhstephenson.com.au)

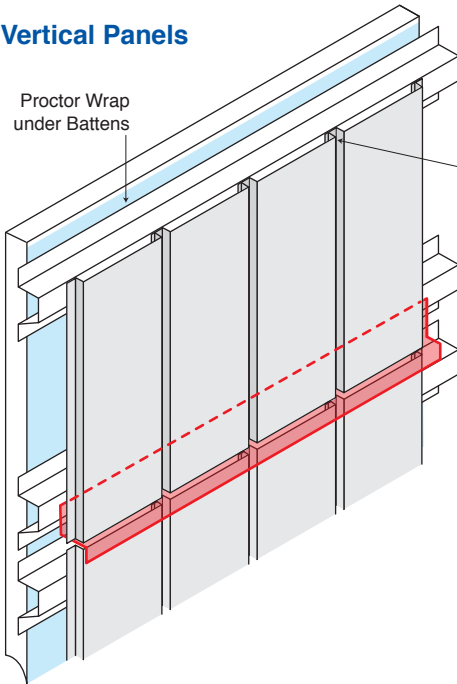


Established 1923

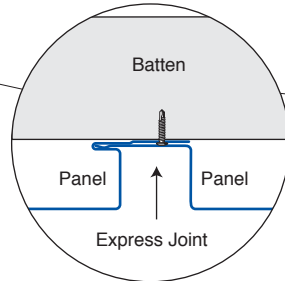
# INTERLOCKING WALL PANEL

JH STEPHENSON  
CLASSIC EURO PANEL RANGE  
WALL CLADDING

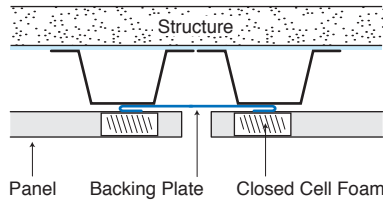
## Vertical Panels



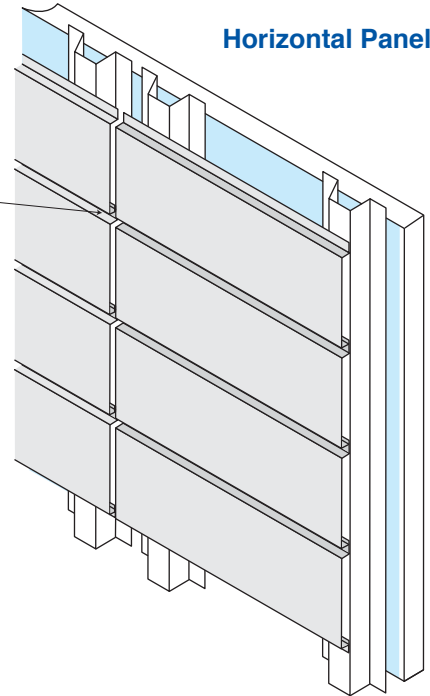
## Express Joint



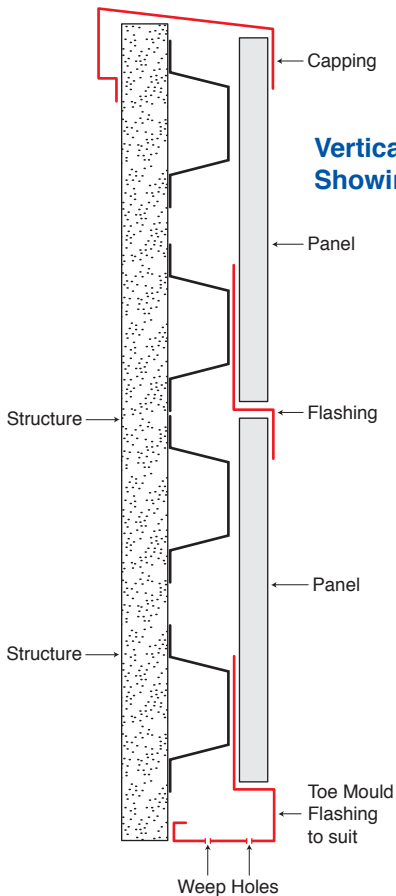
**PLEASE NOTE:**  
Backing Plates  
not shown for clarity.



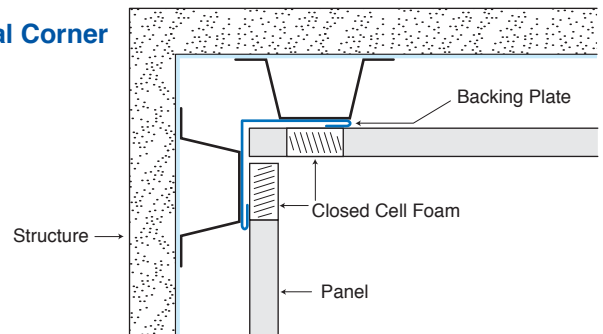
## Horizontal Panels



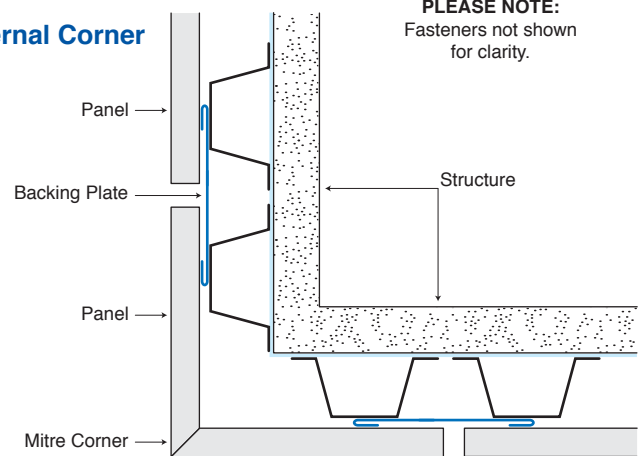
## Vertical Panels Showing Flashing



## Internal Corner



## External Corner



**PLEASE NOTE:**  
Fasteners not shown  
for clarity.

Colorbond®



**OIL CANNING**  
Oil Canning is a characteristic that is inherent in thin gauge metals. Internal stresses, expansion and contraction can cause a wavy surface on flat panels. The Architect and Builder need to be aware of the aesthetic effect that oil canning can have on the project. Recommendations to reduce the effect of oil canning can be found on the [jhstephenson.com](http://jhstephenson.com) web site.

Phone 03 5274 6222 [www.jhstephenson.com.au](http://www.jhstephenson.com.au)



Established 1923